

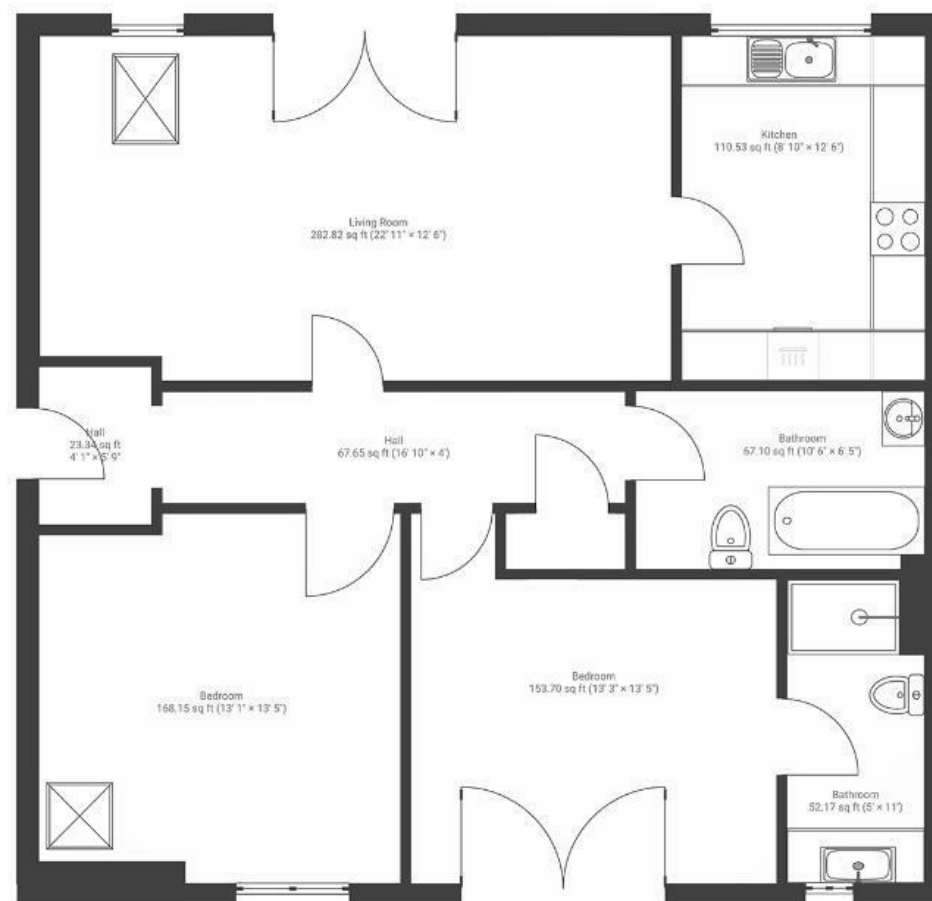
# Portland Court

## HARBOURSIDE

APPROXIMATE FLOOR AREA  
94 SQM / 1011 SQFT



THIRD FLOOR



**Boardwalk**

# Cumberland

, BRISTOL



£450,000



2 Bedrooms



BS1 6XB



2 Bathrooms

*"This has been the place I've called home for 15 years, I've now moved out but some of my favourite memories are on Saturday mornings watching the world pass by and boats moving around the harbour. The view is great from the juliette balcony, it's peaceful and serene"*

